



01 - 09.6  
01.04.GB

# LAMINATED THERMOINSULATED WRAPPING

## **IKA 150 a IKA 220**





# IKA 150

# IKA 220

Laminated  
thermoinsulated  
wrapping

**Laminated thermoinsulated wrapping IKA serves for insulation of valves and other elements with purpose of reducing heat loss, protection against injuries such as burning and protection of actuators against unallowable temperature of the environment.**

Wrapping IKA is made in two variants. **IKA 150** is made of polyester non-absorbing fibre with low inflammability suitable for insulated surfaces up to 150 °C. **IKA 220** is made of glass fibre processed with silicon coating suitable for insulated surfaces up to 220 °C. Middle, thermoinsulated layer consist of mineral felt laminated with a reflective aluminium foil. Wrapping is equipped with flaps with velcro fastener. Laces at both ends enable proper tightening.

## Application

Thermoinsulated wrapping IKA serves especially for insulation of valves in steam-condensate and hot-water applications. IKA is used in power generation, heating, boiler rooms, heat exchanging stations and where there it is necessary or desirable to prevent considerable loss of heat. IKA provides personal protection against burning according to ČSN 07 0620, article 413 (temperature on the surface of the wrapping is max. 25°C higher than ambient temperature). IKA is designed for normal environment (not for explosives zones. IKA excels with a quick and easy handling and it is possible to instal IKA in any position.

## Technical data

Series	IKA 150	IKA 220
Material of inner fibres	polyester fibres	glass fibres
Colour of inner fabric	black	silver grey
Max. temp. of insulated surface	150°C	220°C
Ambient temperature range	-30 to 70°C	
Insulating material	Mineral felt laminated with a reflective aluminium foil - thickness 60 mm	
Heat conductivity coefficient	0,0363 W.m <sup>-1</sup> .K <sup>-1</sup> (at temperature 30°C)	

## Specification code for ordering thermoinsulated wrapping IKA

		XXX	XXX	XX	-	XXX
1. Thermoinsulated wrapping	Izolace IKA	IKA				
2. Max. temperature of insulated surface	150°C		150			
	220°C		220			
3. Geometric execution	For two-way valve, flanged					V2
	For three-way valve, flanged					V3
	Flange connection					PR
	Strainer, flanged					FP
4. Nominal diameter	DN 15 to 200					XXX

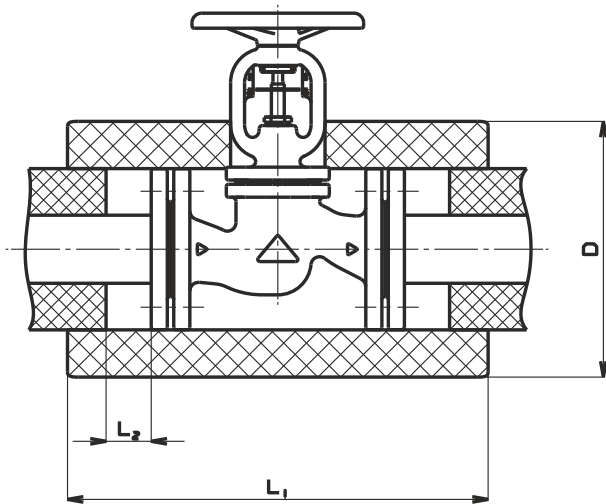
Order example: IKA 220 V2-65

### Dimensions and weights for thermoinsulated wrapping IKA

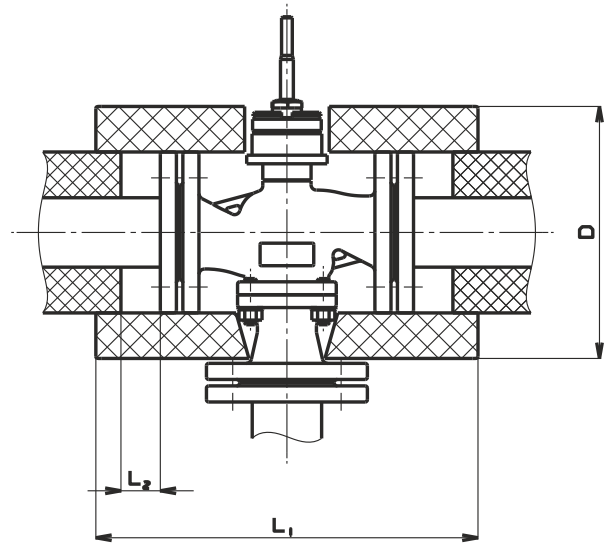
DN	L <sub>1</sub> mm	L <sub>2max</sub> mm	L <sub>5</sub> mm	D mm	V mm	m <sub>(V2, V3)</sub> kg	m <sub>(PR)</sub> kg	m <sub>(FP)</sub> kg
15	375	65	242	215	245	0,43	0,28	0,47
20	409	70	256	225	260	0,49	0,31	0,54
25	419	70	256	235	295	0,54	0,33	0,59
32	459	80	276	255	310	0,65	0,39	0,72
40	479	80	276	265	330	0,72	0,41	0,82
50	513	80	280	280	340	0,82	0,45	0,94
65	587	85	294	300	380	1,02	0,51	1,18
80	621	90	308	315	405	1,15	0,57	1,32
100	661	90	308	350	480	1,39	0,65	1,60
125	735	100	332	390	540	1,75	0,79	2,02
150	855	110	372	420	645	2,22	0,97	2,56
200	1013	125	410	495	745	3,17	1,28	3,65

All dimensions are designed for flanged execution PN 16 to PN 40. Dimensions L<sub>2</sub> is a maximum distance between pipe insulation and flange.

#### IKA xxx V2

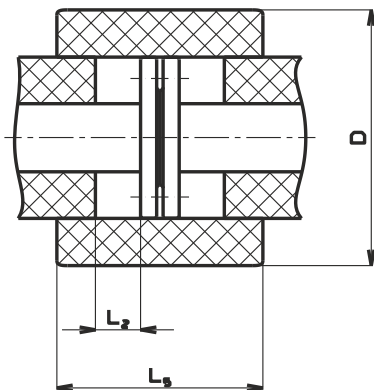


#### IKA xxx V3

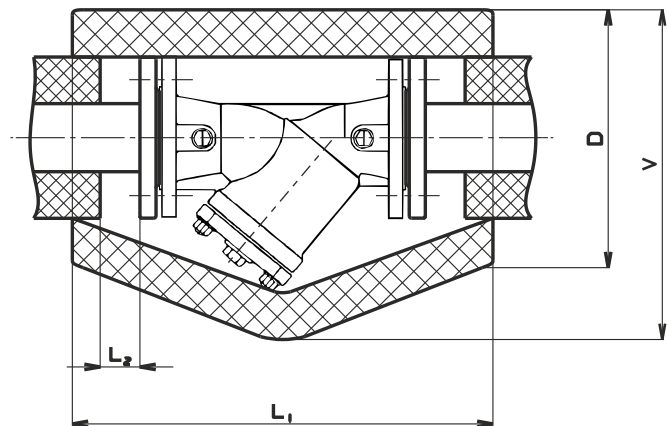


Execution V2 is suitable for the valves series RV/UV/HU 2x0, 2x1, 2x2, 2x3; UV 116, 216, 226, 236. Execution V3 is suitable for the valves series RV 2x4, 2x5

#### IKA xxx PR



#### IKA xxx FP



Execution PR is suitable for flange connections and angle port flange of three-way valves series RV 2x4, 2x5. Execution FP is suitable for flanged strainers series FP 110, 210, 220



**LDM, spol. s r.o.**  
**Litomyšlská 1378**  
**560 02 Česká Třebová**  
**Czech Republic**

tel.: +420 465 502 511  
fax: +420 465 533 101  
e-mail: sale@ldm.cz

**LDM, spol. s r.o.**  
**Office Prague**  
**Podolská 50**  
**147 01 Praha 4**  
**Czech Republic**

tel.: +420 241 087 360  
fax: +420 241 087 192  
e-mail: sale@ldm.cz

**LDM, spol. s r.o.**  
**Office Ústí nad Labem**  
**Ladova 2548/38**  
**400 11 Ústí nad Labem**  
**- Severní Terasa**  
**Czech Republic**

tel.: +420 602 708 257  
e-mail: sale@ldm.cz

**LDM servis, spol. s r.o.**  
**Litomyšlská 1378**  
**560 02 Česká Třebová**  
**Czech Republic**

tel.: +420 465 502 411-3  
fax: +420 465 531 010  
e-mail: servis@ldm.cz

**LDM Bratislava s.r.o.**  
**Mierová 151**  
**821 05 Bratislava**  
**Slovakia**

tel.: +421 2 43415027-8  
fax: +421 2 43415029  
e-mail: ldm@ldm.sk

**LDM, Polska Sp. z o.o.**  
**ul. Bednorza 1**  
**40 384 Katowice**  
**Poland**

tel.: +48 32 730 56 33  
fax: +48 32 730 52 33  
mobile: +48 601 354 999  
e-mail: ldmpolska@ldm.cz

**LDM Armaturen GmbH**  
**Wupperweg 21**  
**D-51789 Lindlar**  
**Germany**

tel.: +49 2266 440333  
fax: +49 2266 440372  
mobile: +49 177 2960469  
e-mail: ldmmarmaturen@ldmvalves.com

**OOO "LDM Promarmatura"**  
**Jubilejnyj prospekt,**  
**dom.6a, of. 601**  
**141400 Khimki Moscow Region**  
**Russia**

tel.: +7 4957772238  
fax: +7 4956662212  
mobile: +7 9032254333  
e-mail: inforus@ldmvalves.com

**TOO "LDM"**  
**Shakirova 33/1**  
**kab. 103**  
**100012 Karaganda**  
**Kazakhstan**

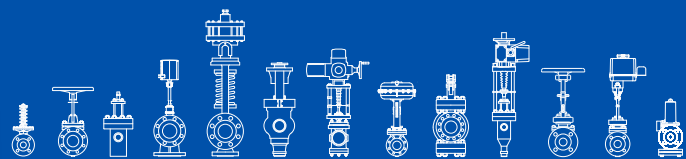
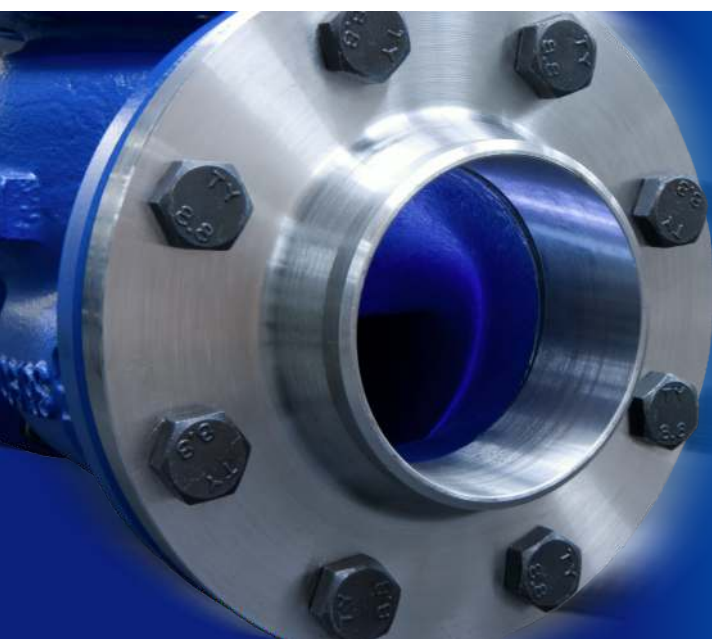
tel.: +7 7212 566 936  
fax: +7 7212 566 936  
mobile: +7 701 738 36 79  
e-mail: sale@ldm.kz

**LDM - Bulgaria - OOD**  
**z. k. Mladost 1**  
**bl. 42, floor 12, app. 57**  
**1784 Sofia**  
**Bulgaria**

tel.: +359 2 9746311  
fax: +359 2 9746311  
mobile: +359 888 925 766  
e-mail: ldm.bg@ldmvalves.com

# www.ldmvalves.com

LDM reserves the right to modify or improve the designs or specifications of such products at any time without notice.



# POWER THROUGH IDEAS