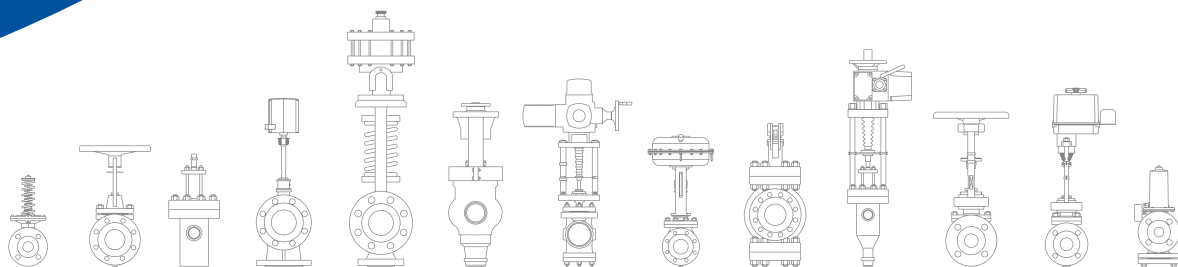


LDM, spol s r.o.

Česká Třebová

www.ldmvalves.com





History and present of LDM

- 1909** Birth of the tradition of valves manufacture in Česká Třebová
- 1948** Nationalization
- 1975** Part of the Sigma concern
- 1990** Sigma concern split and privatized
- 1991** Foundation of LDM, spol. s r.o.

1909 - Josef Jindra with his employees

2024 - Manufacturing plant of LDM
in Česká Třebová



LDM in figures

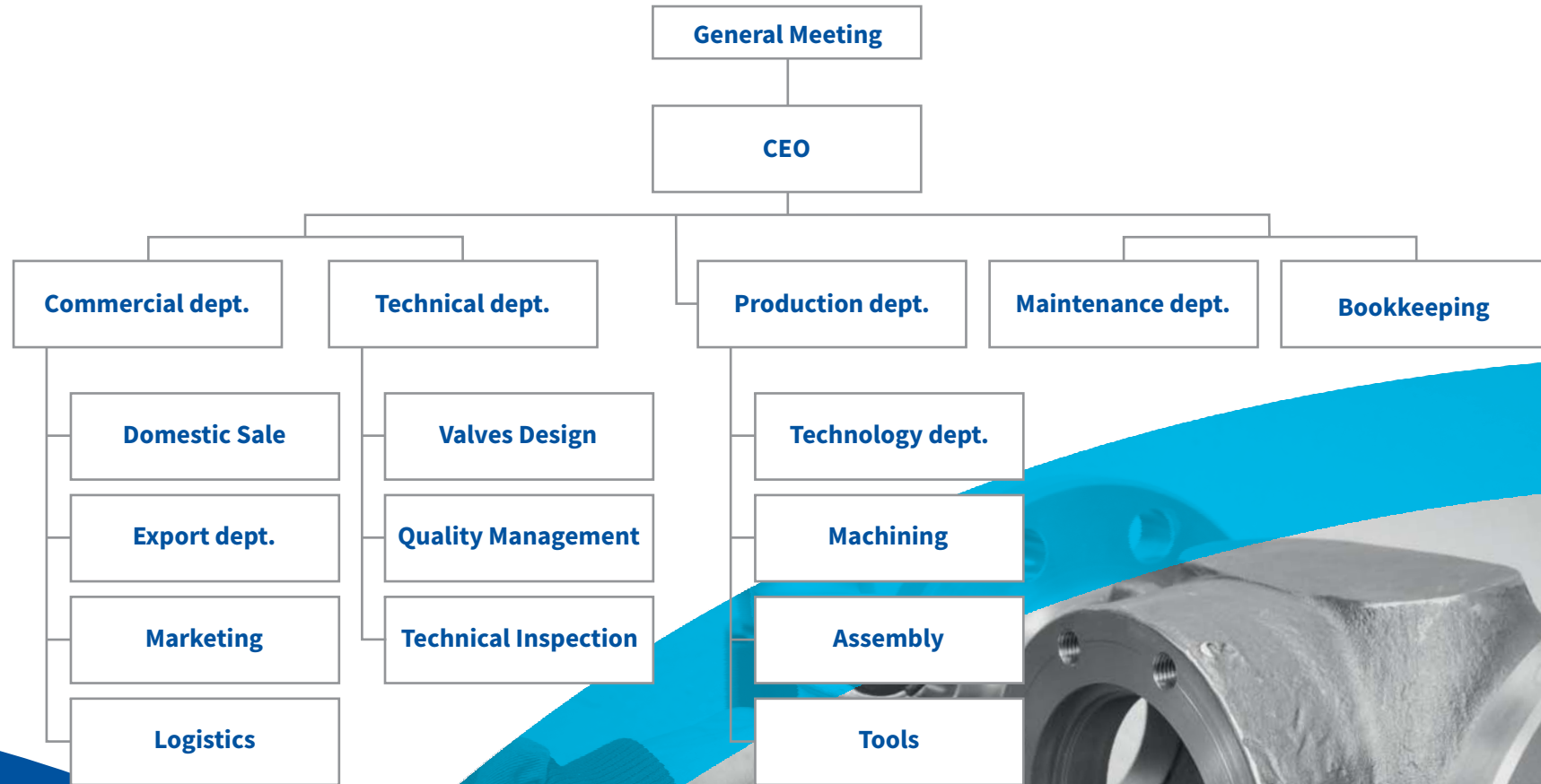
Number of employees: **200**
Number of production workers: **134**
Number of technical staff: **50**
Number of designers: **10**
Senior management: **6**

Plant area: **40.000** m²





Organization chart of LDM



Subsidiaries and technical offices

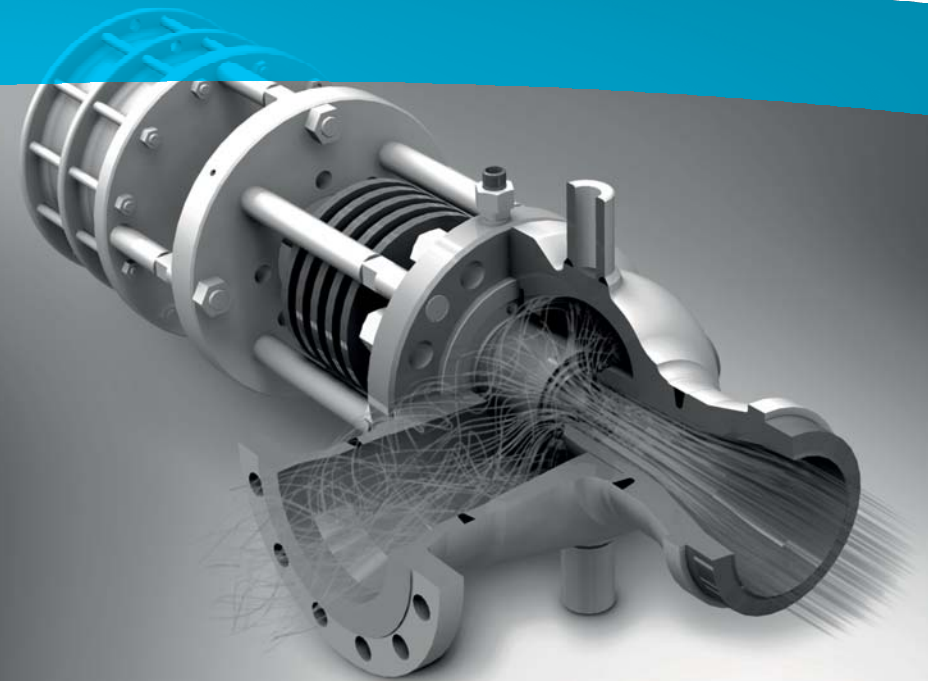
- 1994** LDM Bratislava (Slovakia)
- 1997** LDM Polska (Poland)
- 1997** LDM servis (warranty and post-warranty maintenance and repair)
- 1998** LDM Bulgaria (Bulgaria)
- 1998** technical offices in Prague and Ústí n. Labem
- 2005** OOO "LDM Promarmatura" (Russia)
- 2008** TOO "LDM" (Kazakhstan)





R&D and production

Valve design with support
of Siemens NX , ANSYS and Fluent



R&D and production



Machining parts on turning and milling machining centres



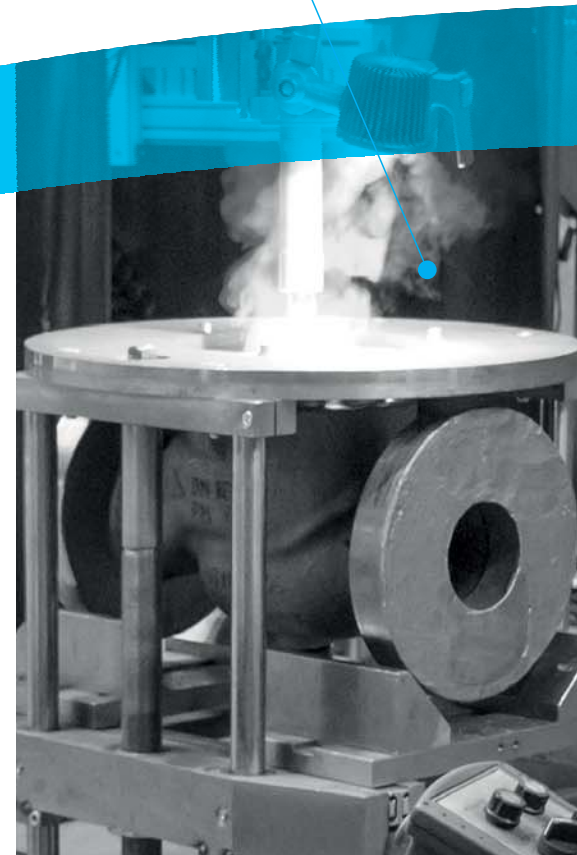


R&D and production

Heat treatment



Robot welding of valve seats



Laser cutting of V-ported plugs





R&D and production

Production management support with APS



Just-in-time valve assembly

100% pressure test of assembled valves



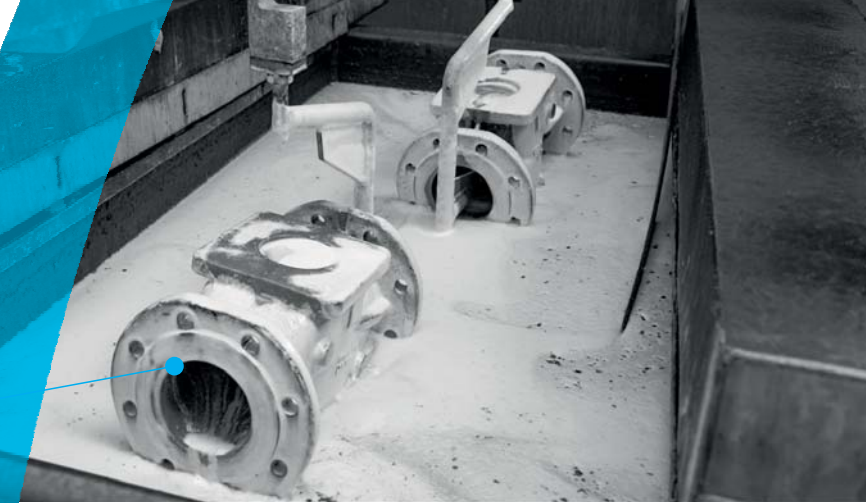
R&D and production

Surface finish coating

- galvanic zinc coating
- chemical nickel-coating
- galvanic tin coating
- cyanide copper coating
- galvanic silver coating

Testing of flow characteristics and Kv values

Lifetime testing



Product portfolio - product segment 01

Valves up to PN 40

- COMAR line
- BEE line
- RV 113
- 200 line
- UV x16
- UV 200
- Check valves



Product portfolio - product segment 02

Valves up to PN 630

- 300 line
- 500 line
- 700 line
- 800 line
- 900 line
- Steam desuperheating
- Series G
- Safety valves
- RK 601
- SU 59



Product portfolio - product segment 03

Valves for Nuclear Power Plants

- A 10, A 11, A 13
- RV 701 NA
- RV 702 NA
- G 46 NB
- G 47 NB
- RV 832
- PV 1108
- SiZ 1508
- PV 1509
- RP 5330



Contacts



LDM, spol. s r.o.
Litomyšlská 1378
560 02 Česká Třebová
Czech Republic
tel.: +420 465 502 511
fax: +420 465 533 101
mail: sale@ldm.cz

REGIONAL OFFICES IN CZECH REPUBLIC

LDM, spol. s r.o.
Office in Prague

Podolská 50
147 01 Praha 4
Czech Republic
tel.: +420 241 087 360

LDM, spol. s r.o.
Office in Ústí nad Labem

Ladova 2548/38
400 11 Ústí nad Labem
Czech Republic
tel.: +420 602 708 257

LDM SUBSIDIARIES ABROAD

LDM Bratislava s.r.o.

Mierová 151
821 05 Bratislava
Slovakia
tel.: +421 243 415 027-8
mobile: +421 903 724 400
mail: ldm@ldm.sk

LDM Polska Sp. z o.o.

ul. Bednorza 1
40-384 Katowice
Poland
tel.: +48 32 730 56 33
mobile: +48 601 354 999
mail: ldmpolska@ldm.cz

LDM, Bulgaria, OOD

z. k. Mladost 1
bl. 42, floor 12, ap. 57
1784 Sofia
Bulgaria
tel.: +359 2 974 6311
mail: ldm.bg@ldmvalves.com

OOO "LDM Promarmatura"

ul. Zarechnaya, dom. 11 k. 105, of. 206
141435 g.o. Khimki, g. Khimki
mkr. Novogorsk, Moscow Region
Russia
tel.: +7 495 777 2238
mobile: +7 903 225 4333
e-mail: inforus@ldmvalves.com

TOO "LDM"

Vodokanalnaya 21
101200 Saraň
Kazakhstan
tel.: +7 7212 566 936
mobile: +7 701 738 3679
mail: sale@ldm.kz

